

Louisiana Workforce

at a glance

www.laworks.net

Release Date: July 23, 2010

Data For: June 2010

In This Issue

2 Economic Comparison

3 NSA State & Area Employment

4 – 7 Data Trends (Graphs)

8 – 10 Nonfarm Employment

11 – 12 Unemployment Rates & Civilian Labor Force

13 Average Hours & Earnings

14 UI Claimants & Labor Market Q & A

15 – 16 Glossary, Data Constraints, Downloads & Web Links

Statewide Overview

Seasonally adjusted nonfarm employment for Louisiana was estimated at 1,906,200 in June 2010. This represents a gain of 5,800 jobs from the previous month, and an 6,900-job increase from June 2009. The largest change from May was seen in education and health services, which increased by 2,700. The education and health services sector also recorded the largest over-the-year change, gaining 11,300 jobs from last June.

Over the month, eight of the eleven industry sectors had increases in employment and three saw declines. After education and health services, the largest over-the-month gain was in leisure and hospitality, which increased by 1,800. Construction saw a gain of 900 jobs, while professional and business services added 800. Financial activities showed 500 more jobs than in May. Trade, transportation, and utilities, information, and other services all showed an increase of 300 jobs over the month. Mining and logging registered the largest decline from May, dropping 900 jobs. Manufacturing fell by 600 jobs, while government posted a 300-job loss.

Over the year, six of the eleven industry sectors showed an increase from the June 2009 figures, with five sectors losing jobs. After education and health services, government posted the largest annual increase, gaining 5,600 jobs. Leisure and hospitality added 4,900 jobs to its rolls compared to June 2009, while other services rose by 2,600. Professional and business services gained 600 jobs from last year, while information added 200 jobs. The largest over-the-year decline was seen in manufacturing, which lost 6,500 jobs. Construction dropped by 5,400, while trade, transportation, and utilities declined by 3,800. Financial activities fell by 1,900, while mining and logging fell by 700.

The June 2010 preliminary seasonally adjusted unemployment rate for Louisiana was 7.0 percent, an increase from the May revised rate of 6.8 percent. The national unemployment rate for June was 9.5 percent, a decrease from the May rate of 9.7 percent. Total unemployment in the state for June was 147,439. The state civilian labor force decreased to 2,095,547 with a decrease in total employment to 1,948,108.

Economic Indicators

Seasonally Adjusted	PRELIMINARY JUNE 2010	
	United States	Louisiana
Civilian Labor Force		
Labor Force	153,741,000	2,095,547
Employed	139,119,000	1,948,108
Unemployed	14,623,000	147,439
Unemployment Rate	9.5	7.0
Nonfarm Wage and Salary Employment	JUNE 2010	JUNE 2010
	United States	Louisiana
Total Nonfarm	130,470,000	1,906,200
Mining and Logging	725,000	50,300
Construction	5,582,000	124,700
Manufacturing	11,670,000	135,400
Trade, Transportation, and Utilities	24,744,000	367,700
Information	2,715,000	24,800
Financial Activities	7,584,000	89,300
Professional and Business Services	16,709,000	194,400
Education and Health Services	19,519,000	276,200
Leisure and Hospitality	13,114,000	199,200
Other Services	5,338,000	69,900
Government	22,770,000	374,300
All Employees Average Hours & Earnings		
(Not Seasonally Adjusted)		
Construction	JUNE 2010	JUNE 2010
	United States	Louisiana
Average Weekly Earnings	\$ 955.20	\$ 878.92
Average Weekly Hours	38.3	41.4
Average Hourly Wages	\$ 24.94	\$ 21.23
Manufacturing		
Average Weekly Earnings	\$ 927.01	\$ 1,008.37
Average Weekly Hours	40.2	42.8
Average Hourly Wages	\$ 23.06	\$ 23.56
Louisiana Unemployment Insurance Activities		
Claims	JUNE 2010	
Initial New & Renewals	19,684	
Continued Weekly Intrastate Only	216,721	
Insured Unemployment Rate	3.1	
Benefits		
Number of First Payment	9,212	
Benefits Paid (000's)	\$ 36,313	
Weeks Compensated	177,619	
Average Wkly. Benefit Amount	\$ 200.03	
Average Duration of Claim (weeks)	19.3	
Exhaustions	5,166	
United States Consumer Price Index		
	JUNE 2010	
All Urban Consumers	218.0	



The civilian labor force and nonfarm **estimates** are prepared according to Bureau of Labor Statistics (BLS) methodology and are comparable with the U.S. and other states' data. For more information, go to page 15.

Economic Comparison

Seasonally Adjusted	PRELIMINARY JUNE 2010		REVISED MAY 2010		REVISED JUNE 2009	
	United States	Louisiana	United States	Louisiana	United States	Louisiana
Civilian Labor Force						
Labor Force	153,741,000	2,095,547	154,393,000	2,095,870	154,759,000	2,067,789
Employed	139,119,000	1,948,108	139,420,000	1,952,446	140,038,000	1,921,494
Unemployed	14,623,000	147,439	14,973,000	143,424	14,721,000	146,295
Unemployment Rate	9.5	7.0	9.7	6.8	9.5	7.1
Nonfarm Wage and Salary Employment	JUNE 2010	JUNE 2010	MAY 2010	MAY 2010	JUNE 2009	JUNE 2009
	United States	Louisiana	United States	Louisiana	United States	Louisiana
Total Nonfarm	130,470,000	1,906,200	130,595,000	1,900,400	130,640,000	1,899,300
Mining and Logging	725,000	50,300	720,000	51,200	692,000	51,000
Construction	5,582,000	124,700	5,604,000	123,800	6,029,000	130,100
Manufacturing	11,670,000	135,400	11,661,000	136,000	11,782,000	141,900
Trade, Transportation, and Utilities	24,744,000	367,700	24,737,000	367,400	24,943,000	371,500
Information	2,715,000	24,800	2,723,000	24,500	2,797,000	24,600
Financial Activities	7,584,000	89,300	7,599,000	88,800	7,742,000	91,200
Professional and Business Services	16,709,000	194,400	16,663,000	193,600	16,453,000	193,800
Education and Health Services	19,519,000	276,200	19,497,000	273,500	19,165,000	264,900
Leisure and Hospitality	13,114,000	199,200	13,077,000	197,400	13,105,000	194,300
Other Services	5,338,000	69,900	5,336,000	69,600	5,367,000	67,300
Government	22,770,000	374,300	22,978,000	374,600	22,565,000	368,700

All Employees Average Hours & Earnings

Construction	United States (Not Seasonally Adjusted)			Louisiana (Not Seasonally Adjusted)		
	JUNE 2010	MAY 2010	JUNE 2009	JUNE 2010	MAY 2010	JUNE 2009
Average Weekly Earnings	\$ 955.20	\$ 949.77	\$ 928.93	\$ 878.92	\$ 894.67	\$ 833.45
Average Weekly Hours	38.3	37.9	37.7	41.4	43.6	40.4
Average Hourly Wages	\$ 24.94	\$ 25.06	\$ 24.64	\$ 21.23	\$ 20.52	\$ 20.63
Manufacturing						
Average Weekly Earnings	\$ 927.01	\$ 942.44	\$ 889.68	\$ 1,008.37	\$ 1,004.36	\$ 960.35
Average Weekly Hours	40.2	40.5	38.8	42.8	42.2	41.7
Average Hourly Wages	\$ 23.06	\$ 23.27	\$ 22.93	\$ 23.56	\$ 23.80	\$ 23.03

Louisiana Unemployment Insurance Activities

Claims	JUNE 2010	MAY 2010	JUNE 2009	% Change From	
				MAY 2010	JUNE 2009
Initial New & Renewals	19,684	18,317	22,379	7.5	-12.0
Continued Weekly Intrastate Only	216,721	237,635	257,321	-8.8	-15.8
Insured Unemployment Rate*	3.1	3.2	2.6	-1.6	17.9
Benefits					
Number of First Payment	9,212	9,436	12,818	-2.4	-28.1
Benefits Paid (000's)	\$ 36,313	\$ 43,138	\$ 52,360	-15.8	-30.6
Weeks Compensated	177,619	207,403	225,703	-14.4	-21.3
Average Wkly. Benefit Amount	\$ 200.03	\$ 210.15	\$ 234.22	-4.8	-14.6
Average Duration of Claim (w eeks)	19.3	22.0	17.1	-12.2	12.8
Exhaustions	5,166	6,952	3,178	-25.7	62.6

* Insured unemployment rate is for the week including the 12th of the month.

United States Consumer Price Index

	JUNE 2010	% Change From:		MAY 2010	% Change From:	
	Index	Prior Month	Prior Year	Index	Prior Month	Prior Year
All Urban Consumers	218.0	-0.1	1.1	218.2	0.1	2.0

Not Seasonally Adjusted State and Area Employment

Not seasonally adjusted nonfarm employment for Louisiana was estimated at 1,910,000 for June 2010. Over the month, employment gained 5,600 jobs from May, while over the year, employment gained 9,400 jobs. Goods-producing employment rose by 600 over the month, and the service-providing employment gained 5,000 jobs compared to May. Over the year, goods-producing industries lost 12,700 jobs while the service-providing sector gained 22,100.

Total nonfarm employment in June for the Alexandria MSA was 64,400, down 300 jobs from May, and down 1,100 from a year ago. The goods-producing sector held steady over the month, while losing 900 jobs compared to the same period last year. Service-providing employment fell by 300 from May, but lost 200 jobs from June 2009.

Total nonfarm employment for the Baton Rouge MSA was estimated at 370,400 for June 2010. Over the month, the MSA showed a gain of 300 jobs, while over the year, nonfarm employment increased by 1,400. Goods-producing employment showed an increase of 200 from last month, but decreased by 1,500 from last year. The service-providing sector added 100 jobs from last month and gained 2,900 jobs compared to June 2009.

The Houma MSA was estimated at 93,000 for June 2010. This shows an over-the-month increase of 200, but an over-the-year loss of 800. Both the goods-producing and service-providing sectors gained 100 jobs over the month. Over the year, the goods-producing sector fell by 800 jobs, while the service-providing sector showed no change.

Total nonfarm employment for the Lafayette MSA stood at 147,400 for June 2010. This represents a decrease from May of 400 jobs and a decrease of 200 jobs from last year. Over the month saw a decline of 200 jobs in both the goods-producing and service-providing sectors. Over the year, goods-producing lost 900 jobs, while the service-providing increased by 700 jobs.

Total nonfarm employment for the Lake Charles MSA was 90,300 for June 2010, a gain of 400 jobs from May. Over the year, nonfarm employment in the MSA fell by 1,200 jobs. Over the month, goods-producing showed no change, while service-providing employment gained 400 jobs. The goods-producing sector lost 1,500 jobs from last June, while the service-providing sector increased by 300 jobs over the year.

Total nonfarm employment for the Monroe MSA was estimated at 76,100 for June 2010, a decrease of 500 jobs from last month. Compared to a year ago, the MSA gained 500 jobs. Goods-producing employment showed no change from last month while gaining 300 jobs from a year ago. Service-providing lost 500 jobs from May, while showing an increase of 200 jobs from June 2009.

Total nonfarm employment for the New Orleans MSA was 522,500 for June 2010. Over the month the MSA gained 1,700 jobs, while over the year saw an increase of 4,800 positions. Goods-producing employment gained 200 jobs from last month, but declined by 2,600 positions from last year. The service-providing sector rose by 1,500 jobs from May and posted a 7,400-job gain compared to June 2009.

Total nonfarm employment for the Shreveport MSA was 176,600 for June 2010, a gain of 500 jobs from last month but a loss of 400 jobs from June 2009. Goods-producing employment showed no change over the month, but fell by 1,000 from June 2009. Service-providing employment gained 500 jobs over the month and 600 jobs compared to last year.

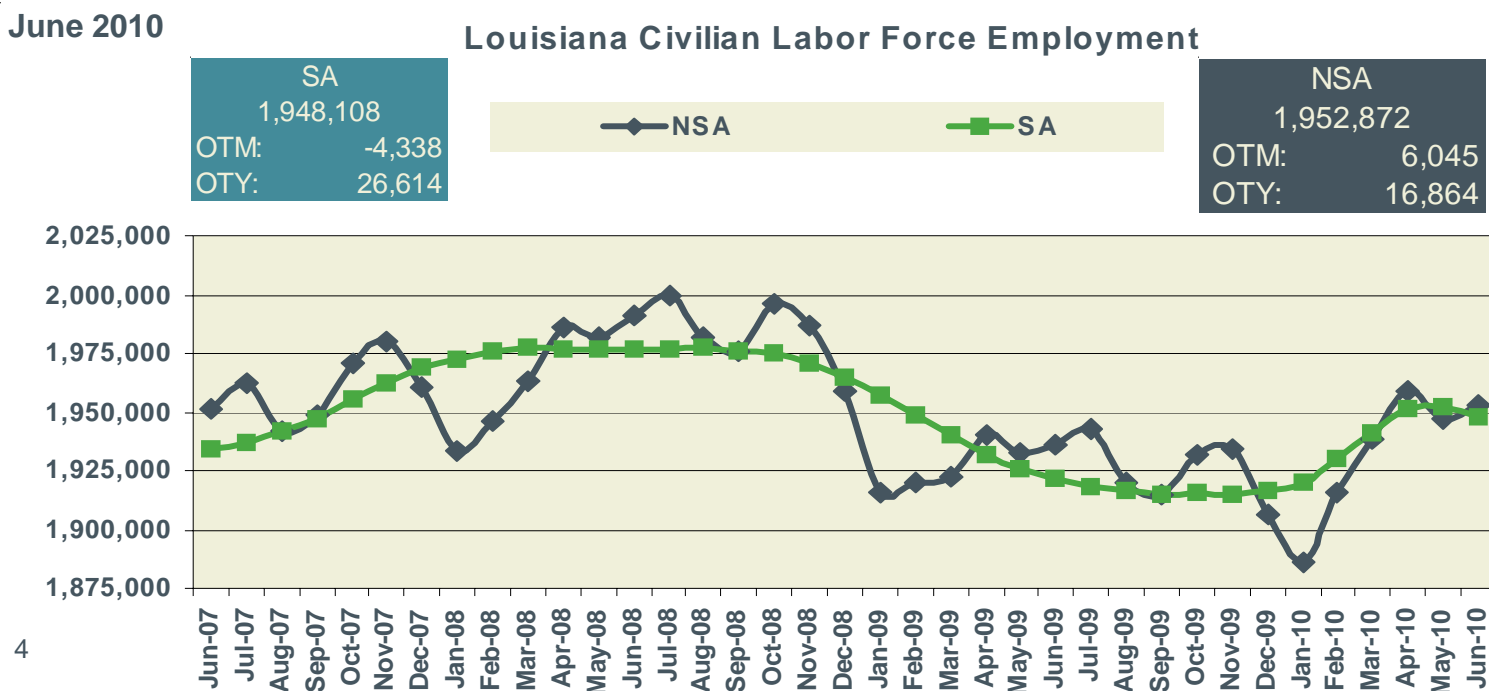
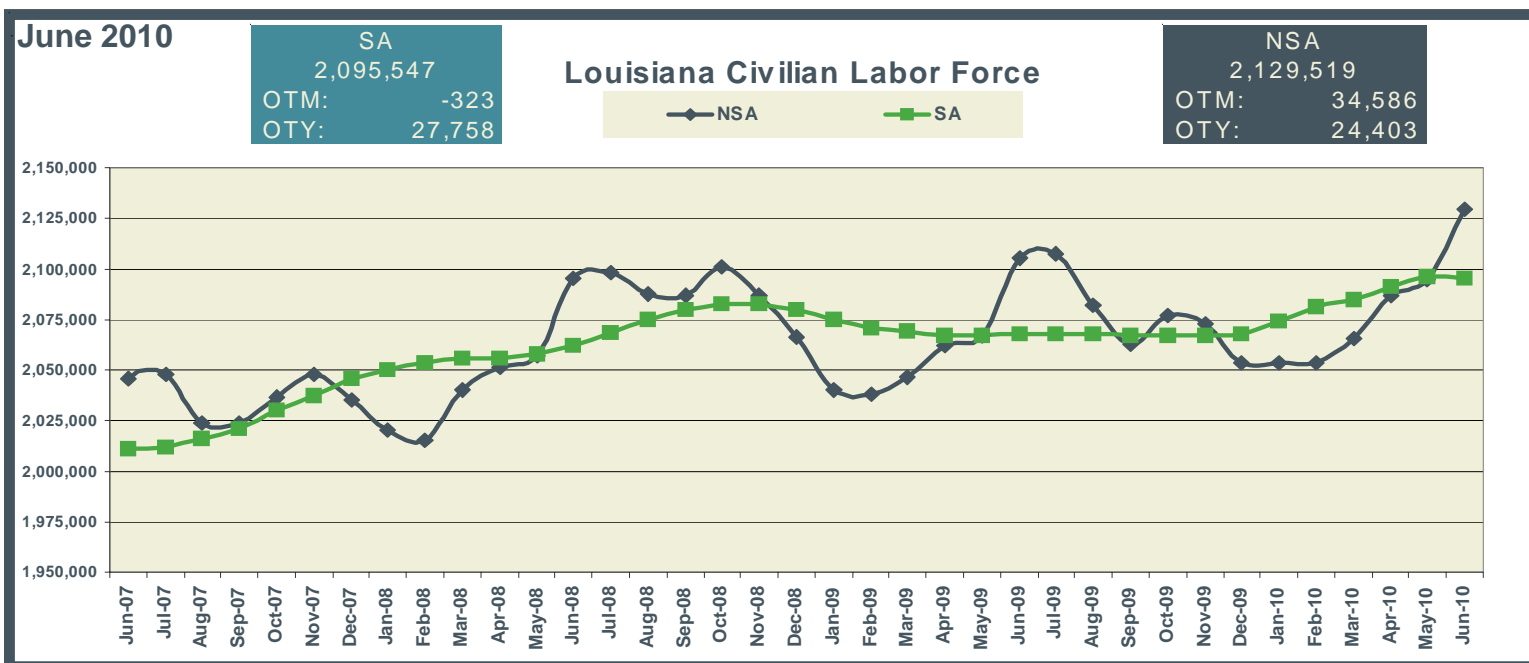
Keys to Graphs

The following graphs have been designed to reflect the over-the-year trends in the statistical data. Below are the most frequently used abbreviations.

- OTM over-the-month change in employment
- OTY over-the-year change in employment
- SA seasonally adjusted estimates
- NSA not seasonally adjusted estimates

Graphs for statewide reflect seasonally adjusted (SA) estimates compared to not seasonally adjusted (NSA) data.

Metropolitan Statistical Areas (MSAs) graphs denote nonfarm employment levels compared to a three year red trend line of the estimated employment. The navy lines in the graphs are the over-the-month changes for each year.

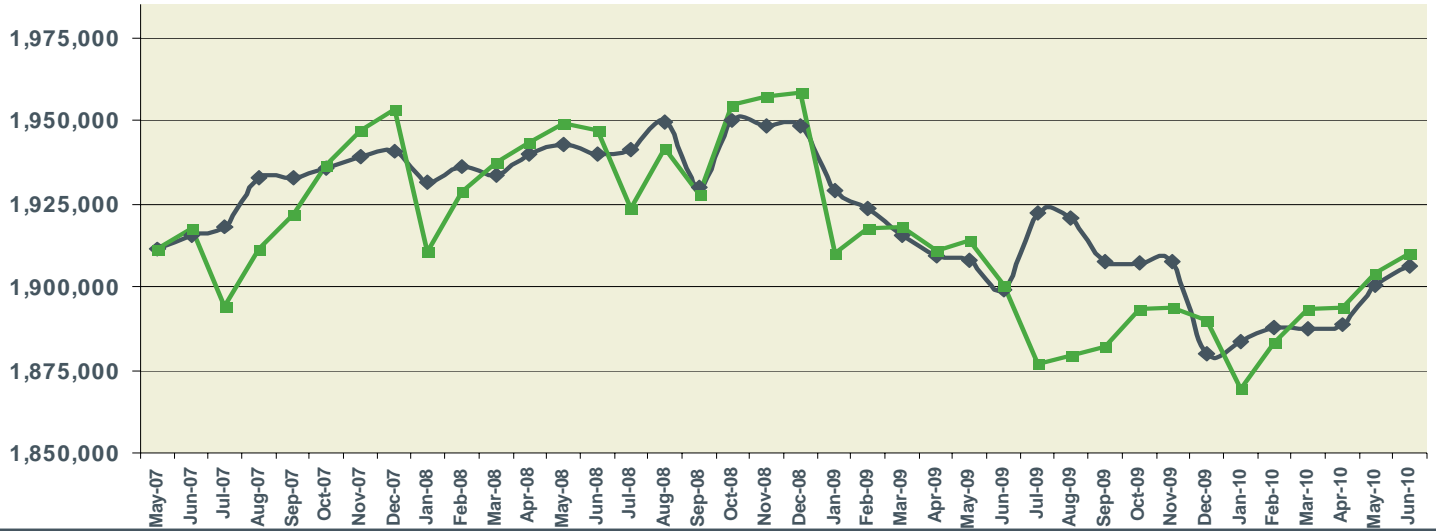


June 2010

SA
1,906,200
OTM: 5,800
OTY: 6,900

Louisiana Nonfarm Employment

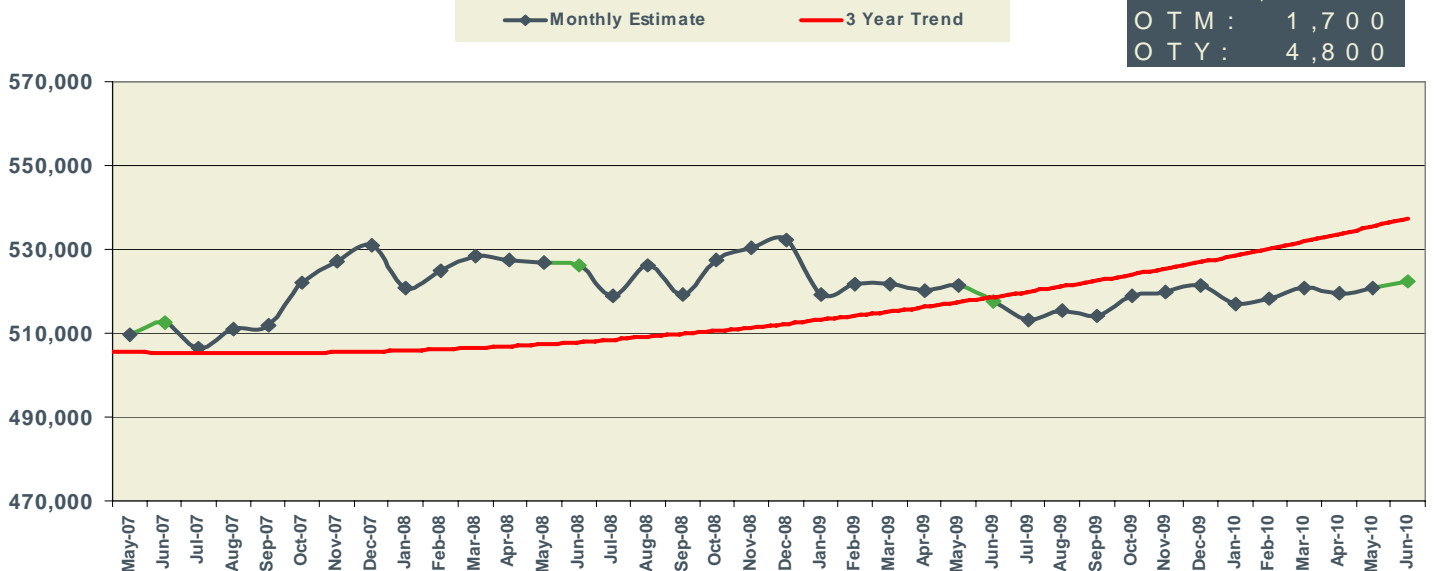
NSA
1,910,000
OTM: 5,600
OTY: 9,400



June 2010

New Orleans MSA Nonfarm Employment

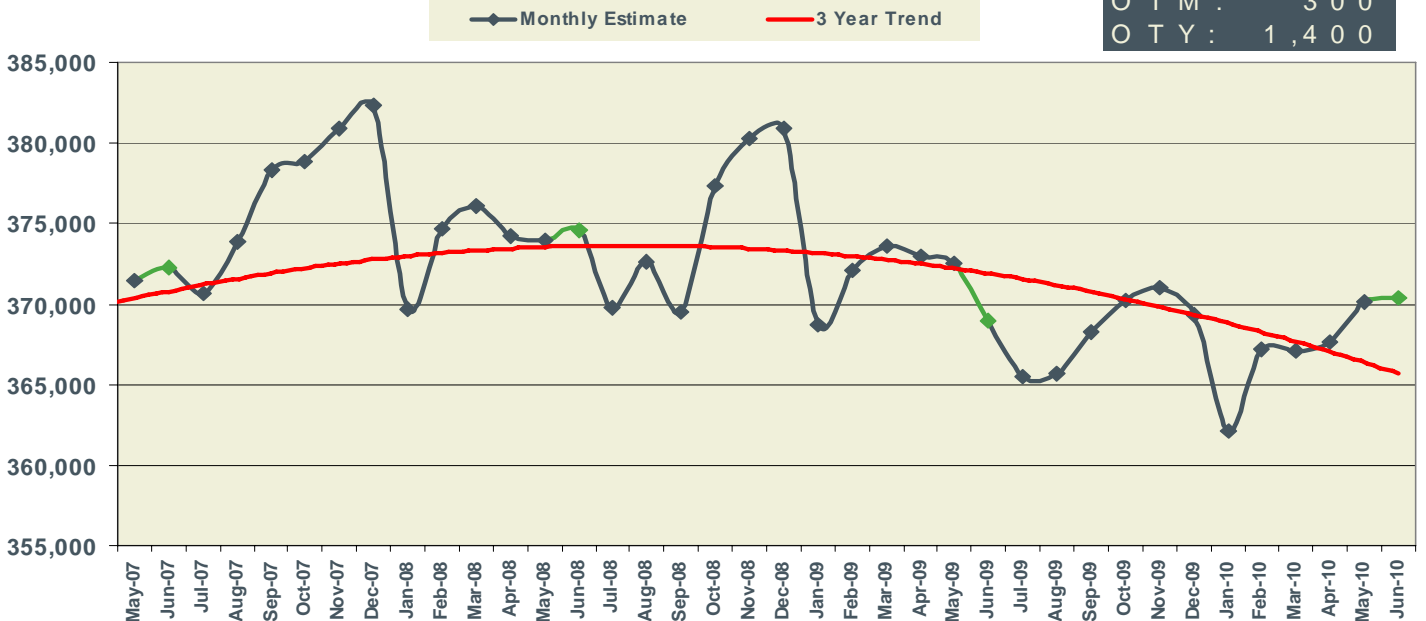
NSA
522,500
OTM: 1,700
OTY: 4,800



June 2010

Baton Rouge MSA Nonfarm Employment

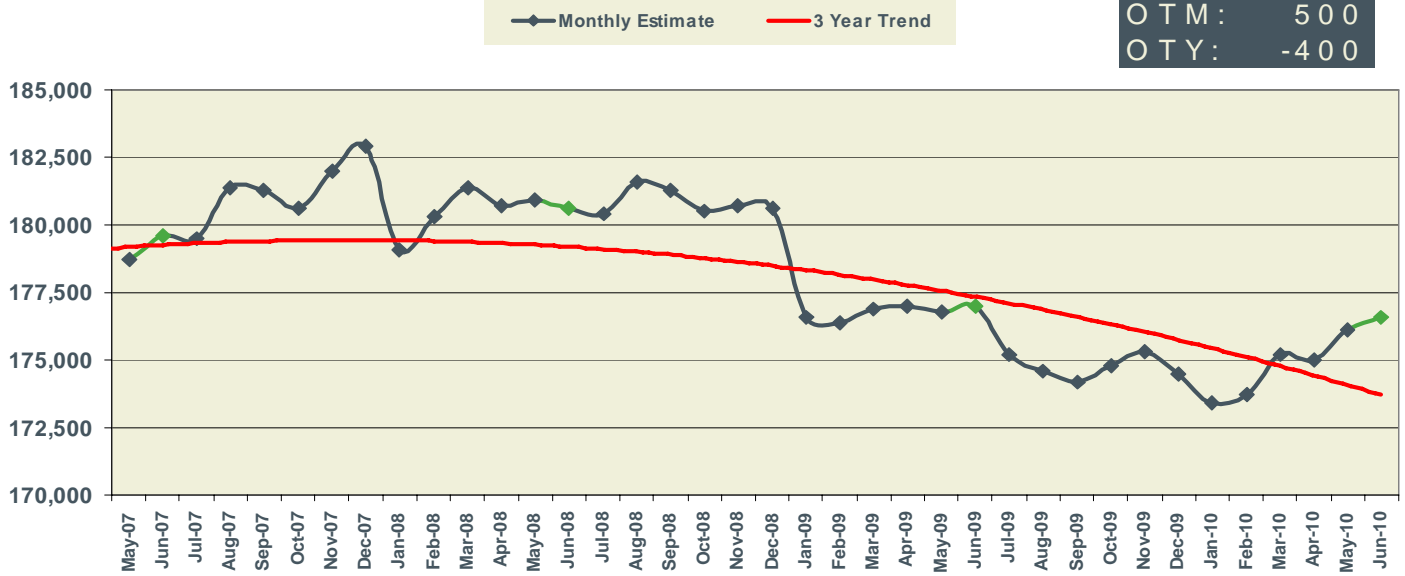
NSA
370,400
OTM: 300
OTY: 1,400



June 2010

Shreveport MSA Nonfarm Employment

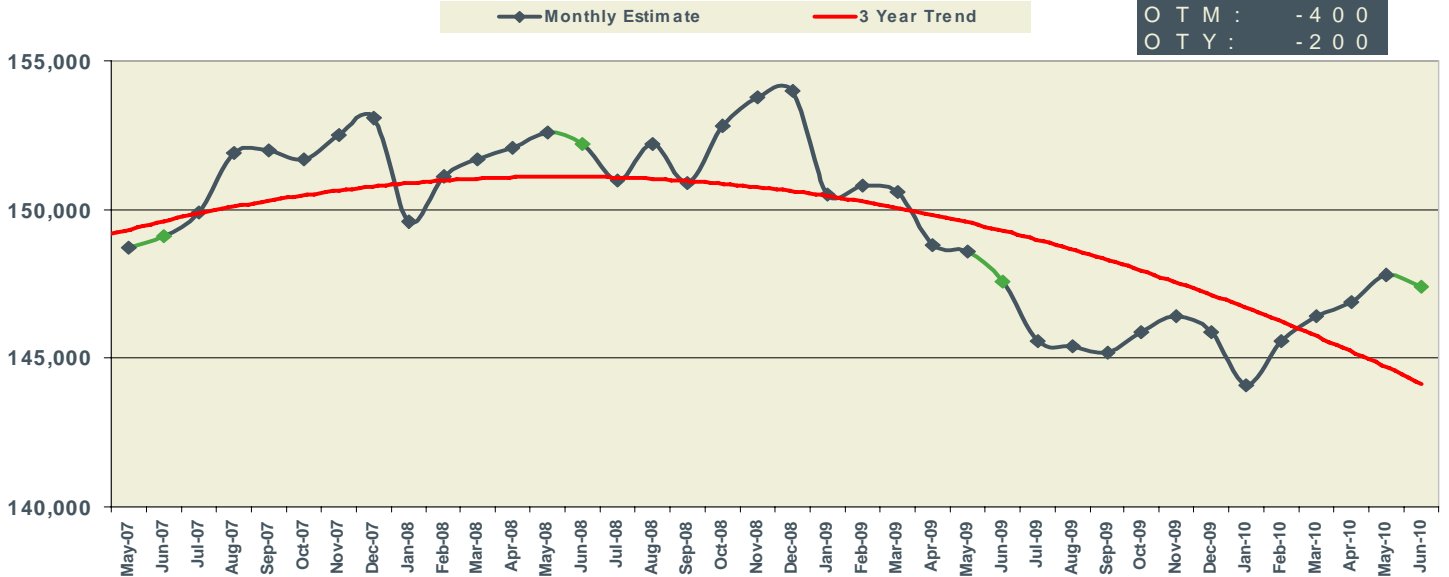
NSA
176,600
OTM: 500
OTY: -400



June 2010

Lafayette MSA Nonfarm Employment

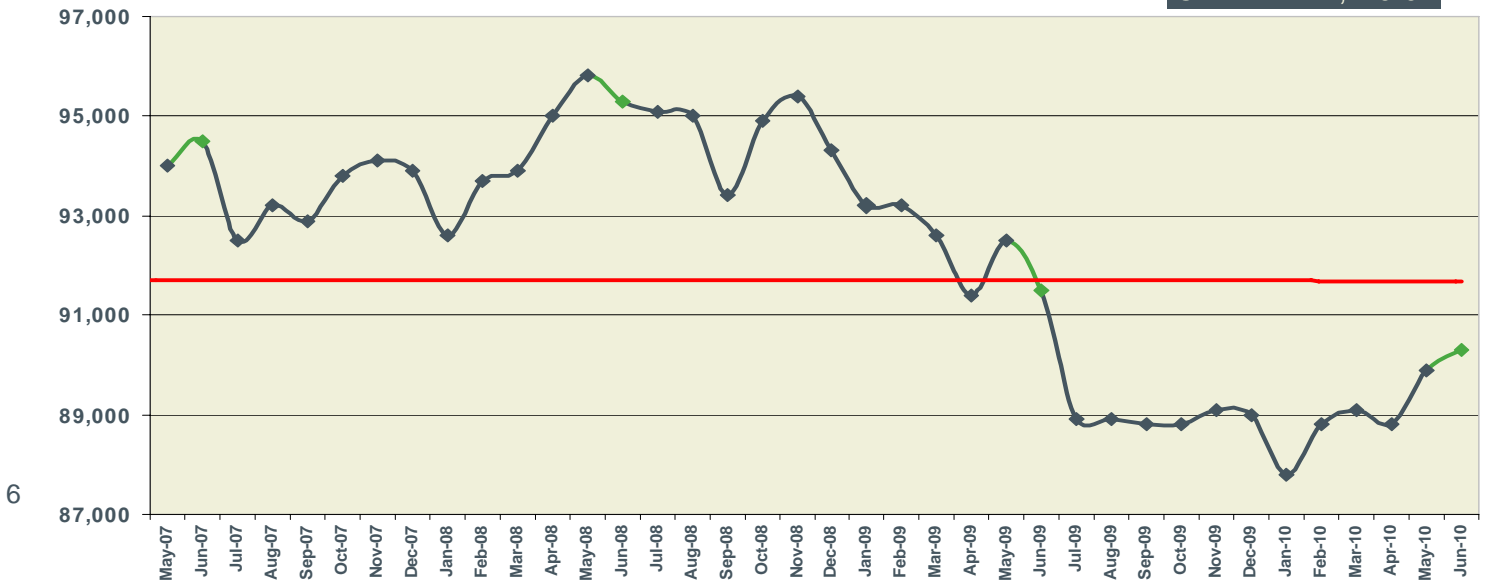
NSA
147,400
OTM: -400
OTY: -200



June 2010

Lake Charles MSA Nonfarm Employment

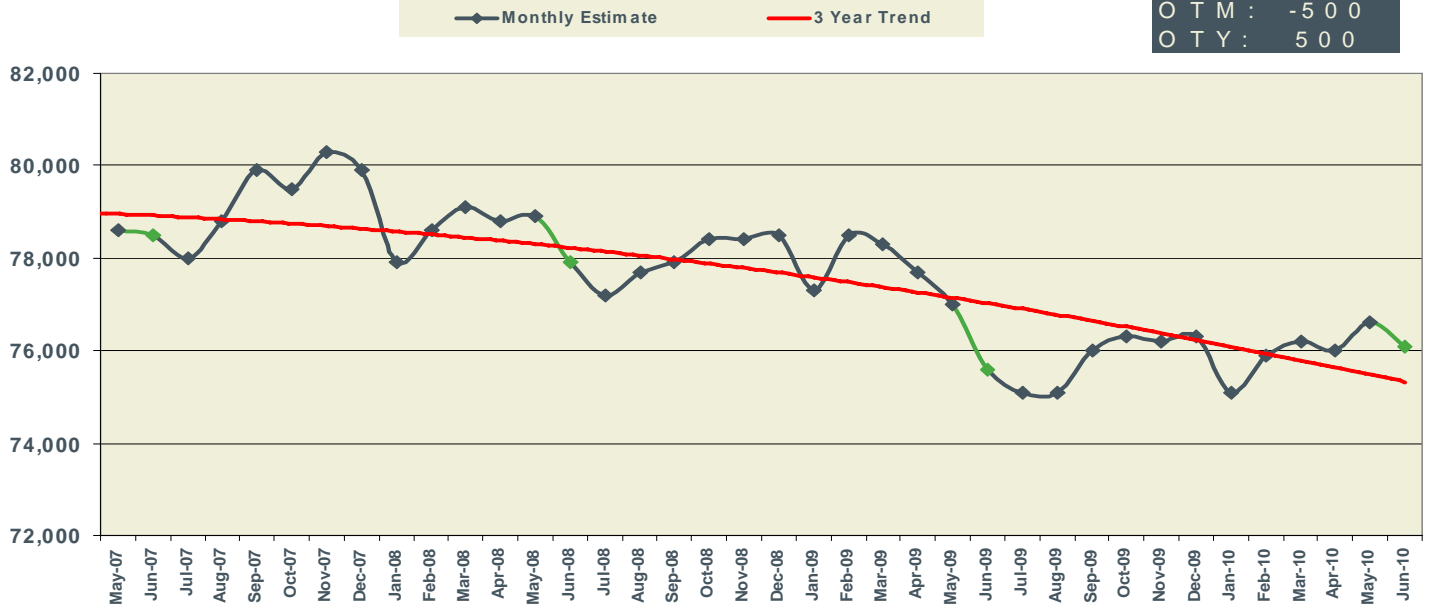
NSA
90,300
OTM: 400
OTY: -1,200



June 2010

Monroe MSA Nonfarm Employment

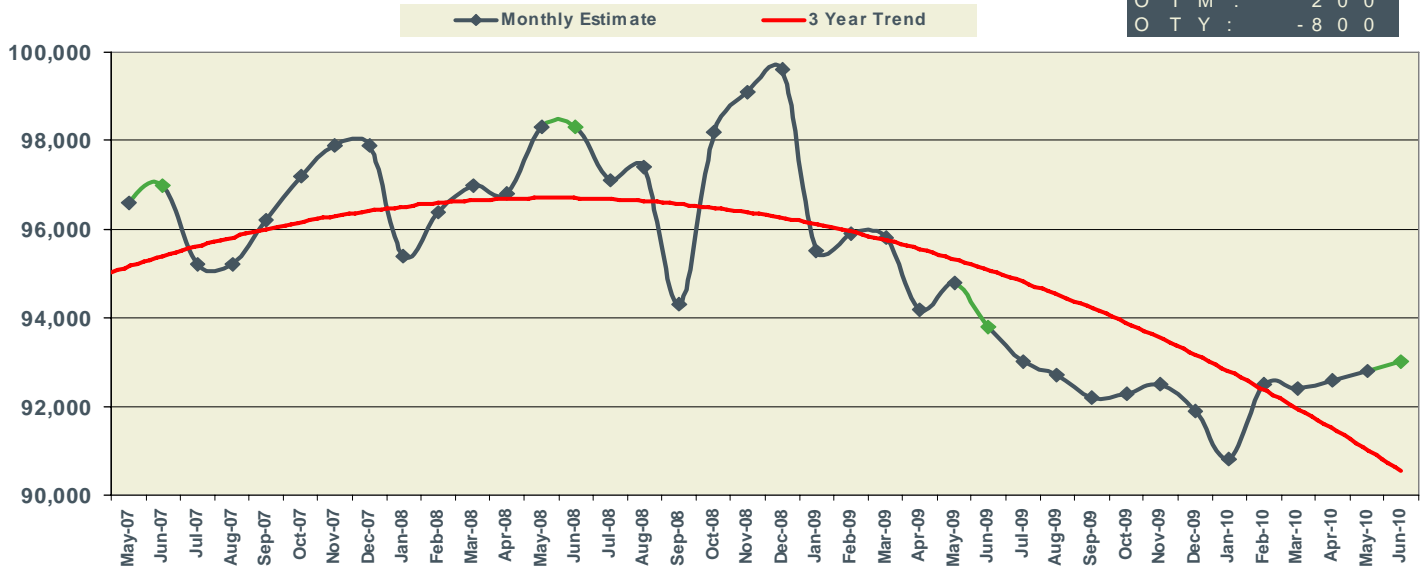
NSA
76,100
OTM: -500
OTY: 500



June 2010

Houma MSA Nonfarm Employment

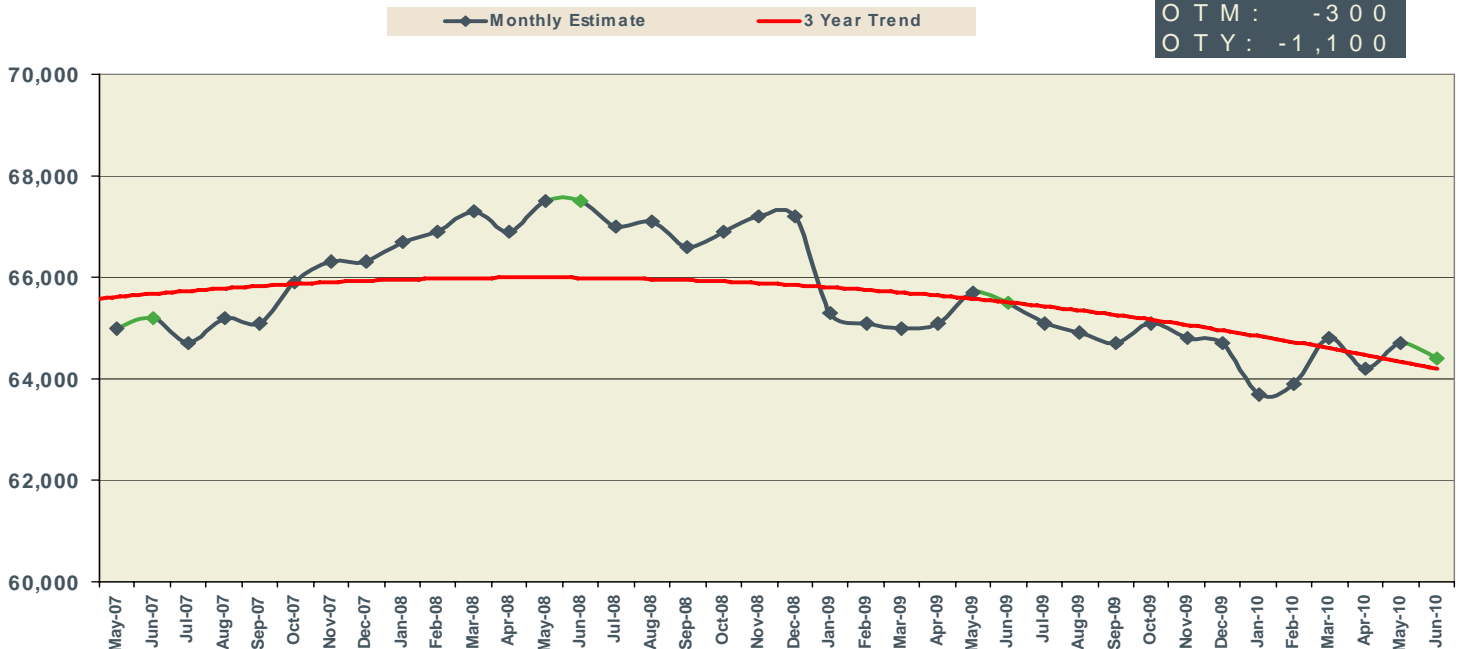
NSA
93,000
OTM: 200
OTY: -800



June 2010

Alexandria MSA Nonfarm Employment

NSA
64,400
OTM: -300
OTY: -1,100



Not Seasonally Adjusted	LOUISIANA			NEW ORLEANS-METairie			BATON ROUGE MSA		
	PREL	REV	REV	PREL	REV	REV	PREL	REV	REV
	JUNE 2010	MAY 2010	JUNE 2009	JUNE 2010	MAY 2010	JUNE 2009	JUNE 2010	MAY 2010	JUNE 2009
Total Nonfarm	1,910,000	1,904,400	1,900,600	522,500	520,800	517,700	370,400	370,100	369,000
Total Private	1,536,700	1,527,900	1,534,700	437,600	435,800	436,200	291,400	290,200	292,400
Goods-Producing	312,000	311,400	324,700	72,100	71,900	74,700	65,800	65,600	67,300
Mining & Logging	50,300	51,200	51,000	7,900	8,000	8,200	1,400	1,500	1,400
Oil & Gas Extraction	8,800	9,000	8,900	3,200	3,200	3,200			
Crude Petroleum & Natural Gas Extraction	8,500	8,700	8,600						
Support Activities for Mining	36,600	36,900	38,200						
Drilling Oil & Gas Wells	7,200	7,200	8,500						
Construction	125,800	124,400	131,400	30,300	30,200	31,700	40,100	39,800	40,600
Construction of Buildings	22,600	22,400	25,900				7,800	7,600	7,900
Residential Building Construction	5,900	5,800	6,600						
Nonresidential Building Construction	16,700	16,600	19,300				6,300	6,400	6,900
Heavy & Civil Engineering Construction	37,900	37,400	41,700	8,100	8,100	8,100	13,200	13,200	15,000
Utility System Construction	21,300	21,200	23,500						
Specialty Trade Contractors	65,300	64,600	63,800	16,400	16,200	17,000	19,100	19,000	17,700
Manufacturing	135,900	135,800	142,300	33,900	33,700	34,800	24,300	24,300	25,300
Durable Goods	72,100	72,600	75,200	17,900	17,900	18,500			
Transportation Equipment Manufacturing	18,400	18,600	20,100	9,200	9,300	9,900			
Ship & Boat Building	13,300	13,300	13,600	7,000	6,900	7,000			
Nondurable Goods	63,800	63,200	67,100	16,000	15,800	16,300	15,700	15,700	16,700
Food Manufacturing	14,800	14,700	15,100						
Paper Manufacturing	6,700	6,700	7,100						
Petroleum & Coal Products Mfg. & Chemical Mfg.									
Petroleum & Coal Products Manufacturing	11,200	11,100	11,400						
Chemical Manufacturing	21,800	21,800	22,400	4,400	4,400	4,600	9,000	9,000	9,300
Basic Chemical Manufacturing	12,000	12,000	12,400				5,300	5,200	5,600
Service-Providing	1,598,000	1,593,000	1,575,900	450,400	448,900	443,000	304,600	304,500	301,700
Private Service-Providing	1,224,700	1,216,500	1,210,000	365,500	363,900	361,500	225,600	224,600	225,100
Trade, Transportation, & Utilities	368,000	366,900	370,300	104,800	104,500	104,700	64,500	64,500	64,700
Wholesale Trade	69,000	69,300	71,800	22,400	22,300	22,900	12,400	12,400	12,800
Merchant Wholesalers, Durable Goods	36,300	36,600	37,600	11,000	11,000	11,300			
Merchant Wholesalers, Nondurable Goods	24,900	24,800	25,300	7,700	7,600	7,800			
Retail Trade	221,100	221,100	221,400	58,200	58,300	58,000	40,600	40,600	40,500
Clothing & Clothing Accessories Stores, General Merchandise									
Motor Vehicle & Parts Dealers	25,600	25,600	26,100						
Building Material & Garden Equipment & Supplies Dealers	19,800	20,100	20,700						
Food & Beverage Stores	36,000	36,000	36,800						
Grocery Stores	30,700	30,600	31,600	8,300	8,500	8,900	5,200	5,200	5,400
Health & Personal Care Stores	15,500	15,400	15,700						
Gasoline Stations	18,600	18,500	18,400						
Clothing and Clothing Accessories Stores	18,600	18,100	18,400						
General Merchandise Stores	51,700	51,500	52,500	11,600	11,500	12,400	9,400	9,400	9,600
Department Stores	16,200	16,200	16,000				2,500	2,500	2,600
Transportation, Warehousing, & Utilities	77,900	76,500	77,100	24,200	23,900	23,800	11,500	11,500	11,400
Transportation and Warehousing	68,100	66,700	67,600						
Truck Transportation	15,700	15,500	16,100						
Support Activities for Transportation	18,800	18,400	19,400						
Information	25,100	24,500	25,000	6,600	6,300	7,000	4,700	4,600	4,900
Telecommunications	10,700	10,600	11,500						
Financial Activities	89,400	88,500	91,700	24,800	24,700	25,600	16,700	16,700	17,300
Finance & Insurance	60,200	59,600	60,800	17,700	17,600	18,000	11,700	11,700	12,500
Credit Intermediation & Related Activities	32,600	32,300	32,300	7,600	7,600	7,800			
Depository Credit Intermediation	23,400	23,300	23,400	6,100	6,100	6,100	4,600	4,600	4,600
Insurance Carriers & Related Activities	24,000	24,000	24,300						
Real Estate & Rental & Leasing	29,200	28,900	30,900						
Professional & Business Services	195,100	193,600	194,000	66,400	65,900	66,300	42,700	42,500	43,600
Professional, Scientific, & Technical Services	80,000	79,800	80,000	28,900	28,600	28,500	18,300	18,100	18,800
Legal Services	19,700	19,400	19,500	8,300	8,200	8,600			
Accounting, Tax Preparation, Bookkeeping & Payroll Services	8,900	9,300	9,300						
Architectural, Engineering, & Related Services	23,100	22,900	23,200						
Management of Companies & Enterprises	24,400	24,300	24,300	8,200	8,200	8,500			
Admin. & Support & Waste Mgmt. & Remediation Serv.	90,700	89,500	89,700	29,300	29,100	29,300	19,000	18,900	19,700
Administrative & Support Services	82,500	81,700	82,100	27,100	27,100	27,200			
Employment Services	27,400	27,200	29,300	9,900	10,000	9,600			
Services to Buildings & Dwellings	17,100	17,000	19,300						
Education & Health Services	274,500	273,600	262,600	72,800	73,000	70,100	48,100	48,200	47,500
Educational Services	34,600	36,200	31,900	17,500	18,000	16,800			
Colleges, Universities, & Professional Schools	20,000	20,800	17,100	9,400	9,400	9,500			
Health Care & Social Assistance	239,900	237,400	230,700	55,300	55,000	53,300	41,400	41,300	41,100
Ambulatory Health Care Services	86,600	85,100	82,700	20,700	20,500	20,000	16,800	16,600	16,300
Offices of Physicians	33,300	33,000	32,300						
Home Health Care Services	22,000	21,700	20,300						
Hospitals	66,300	65,600	65,300	18,200	17,900	17,600	11,200	11,100	11,800
Nursing & Residential Care Facilities	42,000	41,800	40,900						
Nursing Care Facilities	25,300	25,200	25,100						
Social Assistance	45,000	44,900	41,800						
Leisure & Hospitality	202,600	199,900	198,600	70,100	69,600	68,500	35,200	34,600	33,600
Arts, Entertainment, & Recreation	33,100	31,600	30,200	11,400	11,000	9,900			
Amusement, Gambling, & Recreation Industries	24,600	23,000	24,500	6,200	6,100	6,700			
Gambling Industries	11,100	11,000	11,100	2,300	2,200	2,200			
Accommodation & Food Services	169,500	168,300	168,400	58,700	58,600	58,600	29,200	29,000	28,200
Accommodation	29,000	28,300	27,800	13,500	13,100	13,300			
Food Services & Drinking Places	140,500	140,000	140,600	45,200	45,500	45,300	26,800	26,600	26,000
Other Services	70,000	69,500	67,800	20,000	19,900	19,300	13,700	13,500	13,500
Repair & Maintenance	20,100	20,000	19,700						
Automotive Repair & Maintenance	10,700	10,700	10,800						
Personal & Laundry Services	15,700	15,700	15,800						
Government	373,300	376,500	365,900	84,900	85,000	81,500	79,000	79,900	76,600
Federal Government	37,600	39,600	31,800	14,400	14,900	12,600	3,900	4,100	3,400
State Government	111,700	114,800	111,000	20,600	20,700	20,100	41,600	42,400	40,000
Local Government	224,000	222,100	223,100	49,900	49,400	48,800	33,500	33,400	33,200

LOUISIANA & MSAs NONFARM EMPLOYMENT

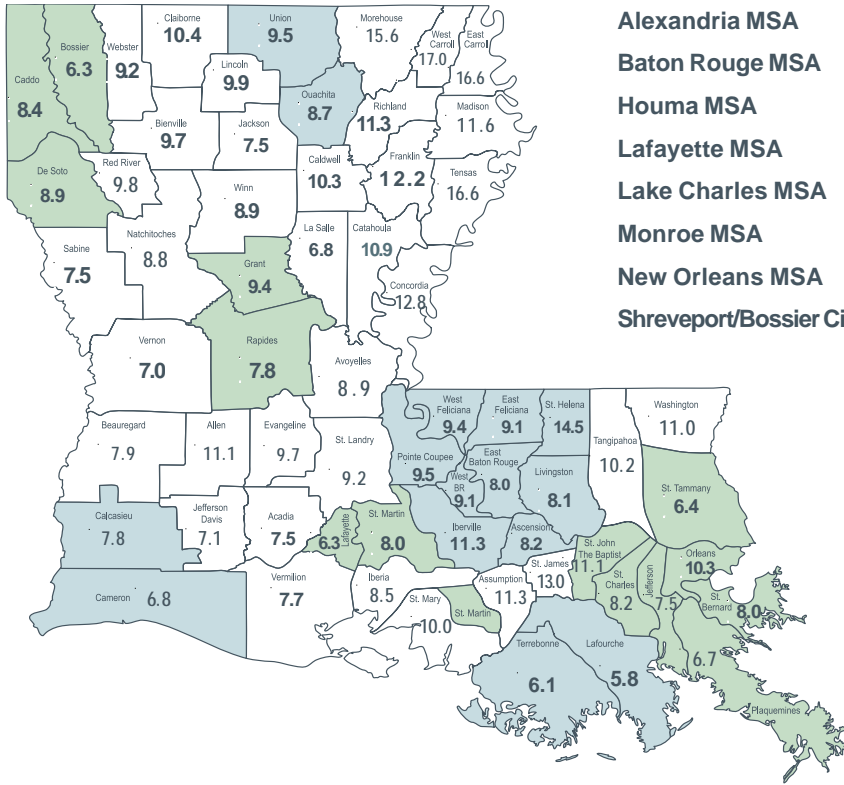
9

Not Seasonally Adjusted	SHREVEPORT-BOSSIER CITY MSA			LAFAYETTE MSA			LAKE CHARLES MSA		
	PREL	REV	REV	PREL	REV	REV	PREL	REV	REV
	JUNE 2010	MAY 2010	JUNE 2009	JUNE 2010	MAY 2010	JUNE 2009	JUNE 2010	MAY 2010	JUNE 2009
Total Nonfarm	176,600	176,100	177,000	147,400	147,800	147,600	90,300	89,900	91,500
Total Private	140,600	139,900	141,400	129,400	128,900	130,300	73,600	73,200	74,500
Goods-Producing	22,600	22,600	23,600	31,000	31,200	31,900	18,100	18,100	19,600
Mining & Logging	4,400	4,400	4,700	14,700	14,900	15,100	1,300	1,300	1,300
Oil & Gas Extraction									
Crude Petroleum & Natural Gas Extraction									
Support Activities for Mining				12,600	12,600	13,200			
Drilling Oil & Gas Wells									
Construction	8,500	8,500	8,700	7,200	7,200	7,200	8,400	8,400	9,400
Construction of Buildings									
Residential Building Construction									
Nonresidential Building Construction									
Heavy & Civil Engineering Construction							3,600	3,600	4,300
Utility System Construction									
Specialty Trade Contractors									
Manufacturing	9,700	9,700	10,200	9,100	9,100	9,600	8,400	8,400	8,900
Durable Goods									
Transportation Equipment Manufacturing	1,500	1,500	1,500						
Ship & Boat Building									
Nondurable Goods							6,400	6,400	6,900
Food Manufacturing									
Paper Manufacturing									
Petroleum & Coal Products Mfg. & Chemical Mfg.							6,200	6,200	6,300
Petroleum & Coal Products Manufacturing									
Chemical Manufacturing									
Basic Chemical Manufacturing									
Service-Providing	154,000	153,500	153,400	116,400	116,600	115,700	72,200	71,800	71,900
Private Service-Providing	118,000	117,300	117,800	98,400	97,700	98,400	55,500	55,100	54,900
Trade, Transportation, & Utilities	33,500	33,300	33,600	28,300	28,200	28,900	17,000	16,900	16,900
Wholesale Trade	6,500	6,500	6,500	7,000	7,000	7,400			
Merchant Wholesalers, Durable Goods									
Merchant Wholesalers, Nondurable Goods									
Retail Trade	21,000	20,900	20,900	17,500	17,500	17,800	10,500	10,500	10,500
Clothing & Clothing Accessories Stores, General Merchandise							3,500	3,500	3,500
Motor Vehicle & Parts Dealers									
Building Material & Garden Equipment & Supplies Dealers									
Food & Beverage Stores									
Grocery Stores									
Health & Personal Care Stores									
Gasoline Stations									
Clothing and Clothing Accessories Stores									
General Merchandise Stores	4,600	4,600	4,600	3,600	3,600	3,700			
Department Stores									
Transportation, Warehousing, & Utilities	6,000	5,900	6,200	3,800	3,700	3,700			
Transportation and Warehousing									
Truck Transportation									
Support Activities for Transportation									
Information	3,300	3,200	3,300	2,700	2,600	2,800			
Telecommunications									
Financial Activities	6,600	6,600	7,000	8,200	8,100	8,200			
Finance & Insurance									
Credit Intermediation & Related Activities									
Depository Credit Intermediation									
Insurance Carriers & Related Activities									
Real Estate & Rental & Leasing									
Professional & Business Services	16,400	16,400	16,700	16,500	16,400	16,600	6,800	6,800	6,900
Professional, Scientific, & Technical Services				7,800	7,800	7,700			
Legal Services									
Accounting, Tax Preparation, Bookkeeping & Payroll Services									
Architectural, Engineering, & Related Services									
Management of Companies & Enterprises									
Admin. & Support & Waste Mgmt. & Remediation Serv.	8,700	8,600	8,600						
Administrative & Support Services									
Employment Services									
Services to Buildings & Dwellings									
Education & Health Services	26,700	26,700	26,300	22,200	22,100	21,700			
Educational Services									
Colleges, Universities, & Professional Schools									
Health Care & Social Assistance	25,200	25,200	24,900	20,400	20,200	20,000			
Ambulatory Health Care Services									
Offices of Physicians									
Home Health Care Services									
Hospitals	9,600	9,600	9,600	5,300	5,300	5,500	3,500	3,500	3,500
Nursing & Residential Care Facilities									
Nursing Care Facilities									
Social Assistance									
Leisure & Hospitality	23,200	22,900	22,800	15,400	15,300	15,200	12,200	12,000	11,800
Arts, Entertainment, & Recreation	7,200	7,000	6,600						
Amusement, Gambling, & Recreation Industries	6,300	6,000	6,300						
Gambling Industries	4,800	4,800	5,000						
Accommodation & Food Services	16,000	15,900	16,200	13,400	13,300	13,200	10,400	10,400	10,300
Accommodation									
Food Services & Drinking Places	13,000	12,900	13,300	12,200	12,200	12,100			
Other Services	8,300	8,200	8,100	5,100	5,000	5,000			
Repair & Maintenance									
Automotive Repair & Maintenance									
Personal & Laundry Services									
Government	36,000	36,200	35,600	18,000	18,900	17,300	16,700	16,700	17,000
Federal Government	5,000	5,100	4,600	1,500	1,800	1,100	1,000	1,200	600
State Government	11,500	11,400	11,200	5,200	6,000	5,100	3,800	3,900	4,300
Local Government	19,500	19,700	19,800	11,300	11,100	11,100	11,900	11,600	12,100

	MONROE MSA			HOUMA-BAYOU CANE- THIBODAU MSA			ALEXANDRIA MSA		
	PREL	REV	REV	PREL	REV	REV	PREL	REV	REV
	JUNE	MAY	JUNE	JUNE	MAY	JUNE	JUNE	MAY	JUNE
	2010	2010	2009	2010	2010	2009	2010	2010	2009
<i>Not Seasonally Adjusted</i>									
Total Nonfarm	76,100	76,600	75,600	93,000	92,800	93,800	64,400	64,700	65,500
Total Private	61,000	61,300	61,400	78,300	77,900	79,800	49,100	49,300	50,000
Goods-Producing	9,700	9,700	9,400	20,000	19,900	20,800	9,300	9,300	10,200
Mining & Logging				6,200	6,300	6,300			
Oil & Gas Extraction									
Crude Petroleum & Natural Gas Extraction									
Support Activities for Mining				5,200	5,200	5,200			
Drilling Oil & Gas Wells									
Construction				5,400	5,300	5,400			
Construction of Buildings									
Residential Building Construction									
Nonresidential Building Construction									
Heavy & Civil Engineering Construction									
Utility System Construction									
Specialty Trade Contractors									
Manufacturing	6,200	6,200	5,800						
Durable Goods									
Transportation Equipment Manufacturing									
Ship & Boat Building									
Nondurable Goods	4,400	4,400	4,000						
Food Manufacturing									
Paper Manufacturing									
Petroleum & Coal Products Mfg. & Chemical Mfg.									
Petroleum & Coal Products Manufacturing									
Chemical Manufacturing									
Basic Chemical Manufacturing									
Service-Providing	66,400	66,900	66,200	73,000	72,900	73,000	55,100	55,400	55,300
Private Service-Providing	51,300	51,600	52,000	58,300	58,000	59,000	39,800	40,000	39,800
Trade, Transportation, & Utilities	13,900	13,900	14,100	23,700	23,700	24,500	11,200	11,200	11,500
Wholesale Trade									
Merchant Wholesalers, Durable Goods									
Merchant Wholesalers, Nondurable Goods									
Retail Trade	9,500	9,500	9,400	11,100	11,100	11,300	7,700	7,700	7,900
Clothing & Clothing Accessories Stores, General Merchandise	3,300	3,200	3,400						
Motor Vehicle & Parts Dealers									
Building Material & Garden Equipment & Supplies Dealers									
Food & Beverage Stores									
Grocery Stores									
Health & Personal Care Stores									
Gasoline Stations									
Clothing and Clothing Accessories Stores									
General Merchandise Stores									
Department Stores									
Transportation, Warehousing, & Utilities									
Transportation and Warehousing									
Truck Transportation									
Support Activities for Transportation				4,500	4,500	4,800			
Information									
Telecommunications									
Financial Activities									
Finance & Insurance									
Credit Intermediation & Related Activities									
Depository Credit Intermediation									
Insurance Carriers & Related Activities									
Real Estate & Rental & Leasing									
Professional & Business Services	7,000	7,000	7,800						
Professional, Scientific, & Technical Services									
Legal Services									
Accounting, Tax Preparation, Bookkeeping & Payroll Services									
Architectural, Engineering, & Related Services									
Management of Companies & Enterprises									
Admin. & Support & Waste Mgmt. & Remediation Serv.									
Administrative & Support Services				4,200	4,000	5,100			
Employment Services				2,600	2,600	3,300			
Services to Buildings & Dwellings									
Education & Health Services	12,900	13,000	12,800						
Educational Services									
Colleges, Universities, & Professional Schools									
Health Care & Social Assistance									
Ambulatory Health Care Services									
Offices of Physicians									
Home Health Care Services									
Hospitals	3,600	3,600	3,700				4,300	4,300	4,100
Nursing & Residential Care Facilities									
Nursing Care Facilities									
Social Assistance									
Leisure & Hospitality	7,200	7,100	7,400	7,600	7,500	7,600			
Arts, Entertainment, & Recreation									
Amusement, Gambling, & Recreation Industries									
Gambling Industries									
Accommodation & Food Services									
Accommodation									
Food Services & Drinking Places									
Other Services									
Repair & Maintenance									
Automotive Repair & Maintenance									
Personal & Laundry Services									
Government	15,100	15,300	14,200	14,700	14,900	14,000	15,300	15,400	15,500
Federal Government	900	1,000	600	1,000	1,000	400	3,100	3,200	3,000
State Government	4,500	4,800	4,200	3,300	3,600	2,900	4,800	4,800	5,100
Local Government	9,700	9,500	9,400	10,400	10,300	10,700	7,400	7,400	7,400

Louisiana Unemployment Rates (Not Seasonally Adjusted)

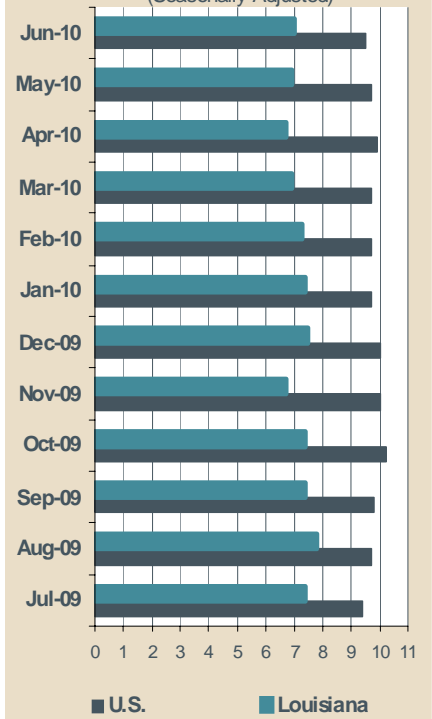
June 2010



Statewide

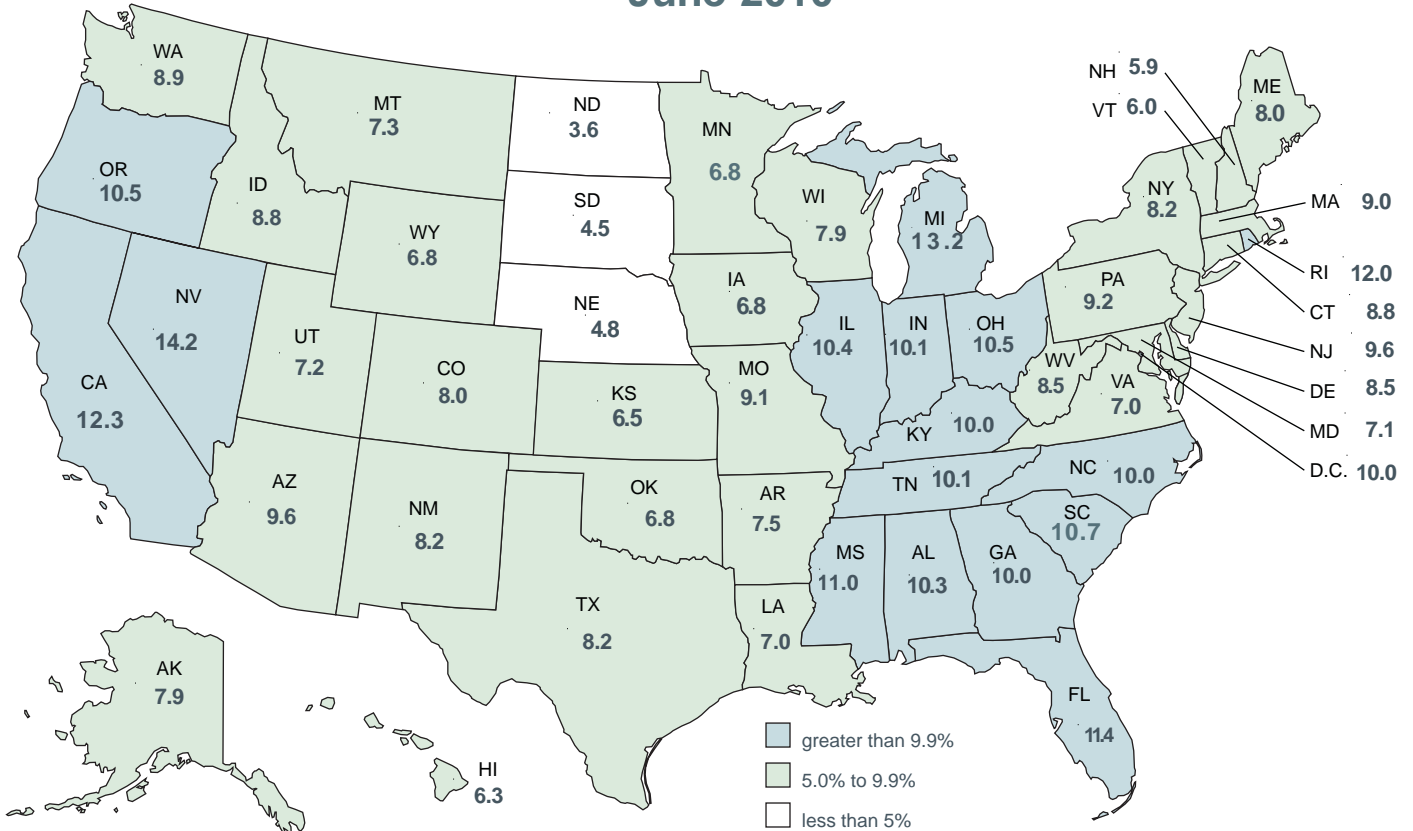
8.3 %

United States - Louisiana Unemployment Rates (Seasonally Adjusted)



United States Unemployment Rates (Seasonally Adjusted)

June 2010



United States Rate 9.5

CIVILIAN LABOR FORCE (Not Seasonally Adjusted)

Area	Preliminary June 2010			Revised May 2010			Revised June 2009		
	Employed	Unemployed	Rate	Employed	Unemployed	Rate	Employed	Unemployed	Rate
UNITED STATES	139,882,000	14,885,000	9.6	139,497,000	14,369,000	9.3	140,826,000	15,095,000	9.7
LOUISIANA	1,952,872	176,647	8.3	1,946,827	148,106	7.1	1,936,008	169,108	8.0
ALEXANDRIA MSA	65,680	5,686	8.0	65,826	4,677	6.6	66,079	5,590	7.8
Grant	8,194	851	9.4	8,212	691	7.8	8,244	846	9.3
Rapides	57,486	4,835	7.8	57,614	3,986	6.5	57,835	4,744	7.6
BATON ROUGE MSA	358,559	32,550	8.3	357,504	27,050	7.0	354,199	28,956	7.6
Ascension	48,461	4,336	8.2	48,319	3,752	7.2	47,872	3,655	7.1
East Baton Rouge	207,523	17,989	8.0	206,912	14,673	6.6	204,999	16,121	7.3
East Feliciana	7,709	772	9.1	7,686	640	7.7	7,615	711	8.5
Iberville	11,600	1,473	11.3	11,566	1,230	9.6	11,459	1,390	10.8
Livingston	55,584	4,886	8.1	55,421	4,232	7.1	54,908	4,382	7.4
Pointe Coupee	9,101	951	9.5	9,074	790	8.0	8,990	819	8.3
St. Helena	3,884	658	14.5	3,872	516	11.8	3,836	562	12.8
West Baton Rouge	10,195	1,022	9.1	10,165	821	7.5	10,071	866	7.9
West Feliciana	4,502	465	9.4	4,489	395	8.1	4,447	450	9.2
HOUMA-BAYOU CANE- *THIBODAUX MSA	98,969	6,273	6.0	98,413	5,450	5.2	98,902	5,961	5.7
Lafourche	46,600	2,871	5.8	46,338	2,461	5.0	46,569	2,745	5.6
Terrebonne	52,369	3,402	6.1	52,075	2,989	5.4	52,333	3,216	5.8
LAFAYETTE MSA	129,231	9,183	6.6	129,309	7,721	5.6	128,600	8,958	6.5
Lafayette	106,549	7,201	6.3	106,613	6,024	5.3	106,029	7,016	6.2
St. Martin	22,682	1,982	8.0	22,696	1,697	7.0	22,571	1,942	7.9
LAKE CHARLES MSA	89,889	7,609	7.8	89,341	6,425	6.7	90,316	7,280	7.5
Calcasieu	86,619	7,370	7.8	86,091	6,249	6.8	87,031	7,046	7.5
Cameron	3,270	239	6.8	3,250	176	5.1	3,285	234	6.6
MONROE MSA	75,980	7,358	8.8	76,374	6,178	7.5	74,963	7,537	9.1
Ouachita	66,581	6,366	8.7	66,926	5,337	7.4	65,690	5,905	8.2
Union	9,399	992	9.5	9,448	841	8.2	9,273	1,632	15.0
NEW ORLEANS-METairie- *KENNER MSA	508,608	45,261	8.2	505,830	37,850	7.0	500,016	42,027	7.8
Jefferson	207,378	16,802	7.5	206,245	14,498	6.6	203,874	15,796	7.2
New Orleans City/Orleans	125,733	14,511	10.3	125,046	11,509	8.4	123,609	13,169	9.6
Plaquemines	8,072	581	6.7	8,028	509	6.0	7,935	673	7.8
St. Bernard	16,757	1,452	8.0	16,665	1,241	6.9	16,474	1,365	7.7
St. Charles	23,616	2,098	8.2	23,487	1,790	7.1	23,217	1,870	7.5
St. John Baptist	19,877	2,493	11.1	19,768	2,101	9.6	19,541	2,024	9.4
St. Tammany	107,176	7,324	6.4	106,591	6,202	5.5	105,366	7,130	6.3
SHREVEPORT-BOSSIER *CITY MSA	173,633	14,723	7.8	172,786	12,280	6.6	172,327	15,559	8.3
Bossier	51,191	3,460	6.3	50,941	2,969	5.5	50,806	3,781	6.9
Caddo	111,745	10,213	8.4	111,200	8,376	7.0	110,905	10,636	8.8
De Soto	10,697	1,050	8.9	10,645	935	8.1	10,617	1,142	9.7
NON-MSA PARISHES									
Acadia (Crowley) ¹	24,884	2,008	7.5	24,743	1,706	6.5	24,843	2,105	7.8
Allen	8,693	1,082	11.1	8,642	915	9.6	8,413	1,017	10.8
Assumption (Pierre Part) ¹	9,575	1,216	11.3	9,533	1,070	10.1	9,748	947	8.9
Avoyelles	15,707	1,536	8.9	15,656	1,297	7.7	15,445	1,494	8.8
Beauregard (DeRidder) ¹	14,024	1,200	7.9	14,075	1,022	6.8	13,451	1,355	9.2
Bienville	5,940	635	9.7	5,915	556	8.6	5,696	727	11.3
Caldwell	4,311	495	10.3	4,321	422	8.9	4,265	525	11.0
Catahoula	3,943	480	10.9	3,949	400	9.2	3,915	553	12.4
Claiborne	5,964	690	10.4	6,005	588	8.9	6,184	757	10.9
Concordia (Natchez, MS-LA) ¹	6,555	958	12.8	6,618	785	10.6	6,581	984	13.0
East Carroll	2,599	518	16.6	2,620	417	13.7	2,620	427	14.0
Evangeline	12,012	1,288	9.7	11,976	1,049	8.1	11,933	1,279	9.7
Franklin	7,115	986	12.2	7,096	851	10.7	7,179	980	12.0
Iberia (New Iberia) ¹	31,645	2,958	8.5	31,340	2,542	7.5	32,561	2,917	8.2
Jackson (Ruston) ¹	6,164	502	7.5	6,239	455	6.8	6,148	619	9.1
Jefferson Davis (Jennings) ¹	14,174	1,089	7.1	14,077	905	6.0	14,065	1,129	7.4
La Salle	6,262	457	6.8	6,211	389	5.9	5,879	586	9.1
Lincoln (Ruston) ¹	17,849	1,961	9.9	18,068	1,536	7.8	17,804	1,873	9.5
Madison (Tallulah) ¹	4,261	561	11.6	4,272	469	9.9	4,519	528	10.5
Morehouse (Bastrop) ¹	9,824	1,820	15.6	9,892	1,551	13.6	10,027	2,123	17.5
Natchitoches (Natchitoches) ¹	16,393	1,588	8.8	16,469	1,339	7.5	16,133	1,682	9.4
Red River	3,304	360	9.8	3,319	301	8.3	3,229	381	10.6
Richland	8,071	1,024	11.3	8,072	878	9.8	8,252	1,040	11.2
Sabine	9,145	738	7.5	9,174	614	6.3	8,906	922	9.4
St. James	8,713	1,297	13.0	8,651	1,067	11.0	8,522	1,007	10.6
St. Landry (Opelousas, Eunice) ¹	36,124	3,669	9.2	35,784	3,131	8.0	35,829	3,447	8.8
St. Mary (Morgan City) ¹	21,422	2,391	10.0	21,281	2,074	8.9	21,746	2,061	8.7
Tangipahoa (Hammond) ¹	49,841	5,673	10.2	49,805	4,700	8.6	48,929	4,851	9.0
Tensas	1,709	341	16.6	1,746	290	14.2	1,881	291	13.4
Vermilion (Abbeville) ¹	23,369	1,961	7.7	23,219	1,661	6.7	23,575	1,992	7.8
Vernon (Fort Polk South) ¹	20,065	1,505	7.0	20,044	1,288	6.0	19,740	1,552	7.3
Washington (Bogalusa) ¹	14,464	1,794	11.0	14,504	1,473	9.2	14,447	1,665	10.3
Webster (Mindon) ¹	18,098	1,839	9.2	17,946	1,529	7.9	18,142	2,011	10.0
West Carroll	3,744	765	17.0	3,777	681	15.3	3,911	776	16.6
Winn	6,360	620	8.9	6,407	521	7.5	6,088	637	9.5

¹In addition to the eight (8) Metropolitan Statistical Areas (MSAs) in Louisiana, there are seventeen (17) Micropolitan Statistical Areas (MCs): Jackson and Lincoln Parishes combine to constitute one MC area. Civilian Labor Force can be derived by adding employed and unemployed. For related information or data, please visit: www.bls.gov/lau/home.htm.

LOUISIANA - PRIVATE EMPLOYMENT (Not Seasonally Adjusted)

	Avg. Weekly Earnings (\$)			Avg. Weekly Hours			Avg. Hourly Earnings (\$)		
	JUNE	MAY	JUNE	JUNE	MAY	JUNE	JUNE	MAY	JUNE
	2010	2010	2009	2010	2010	2009	2010	2010	2009
Total Private	706.56	710.09	703.00	36.8	37.1	36.2	19.20	19.14	19.42
Goods-Producing	988.68	989.41	926.70	42.8	43.3	41.5	23.10	22.85	22.33
Private Service-Providing	635.05	638.29	643.45	35.3	35.5	34.8	17.99	17.98	18.49
Construction	878.92	894.67	833.45	41.4	43.6	40.4	21.23	20.52	20.63
Manufacturing	1,008.37	1,004.36	960.35	42.8	42.2	41.7	23.56	23.80	23.03
Trade, Transportation, and Utilities	658.75	658.61	633.56	37.6	37.4	37.6	17.52	17.61	16.85
Financial Activities	680.04	716.25	736.94	36.0	37.5	36.5	18.89	19.10	20.19
Professional and Business Services	921.96	934.57	880.97	39.0	39.4	37.6	23.64	23.72	23.43
Education and Health Services	548.40	552.09	556.53	33.5	33.0	32.3	16.37	16.73	17.23
Leisure and Hospitality	332.85	331.93	317.97	27.9	27.8	27.2	11.93	11.94	11.69

METROPOLITAN STATISTICAL AREA (MSA) PRIVATE EMPLOYMENT (Not Seasonally Adjusted)

	Avg. Weekly Earnings (\$)			Avg. Weekly Hours			Avg. Hourly Earnings (\$)		
	JUNE	MAY	JUNE	JUNE	MAY	JUNE	JUNE	MAY	JUNE
	2010	2010	2009	2010	2010	2009	2010	2010	2009
Alexandria	572.27	563.49	453.10	35.7	35.8	34.3	16.03	15.74	13.21
Baton Rouge	719.19	712.05	751.41	36.6	36.2	34.5	19.65	19.67	21.78
Houma	815.25	807.61	859.87	40.6	40.3	41.6	20.08	20.04	20.67
Lafayette	690.00	681.47	658.84	37.5	37.3	36.2	18.40	18.27	18.20
Lake Charles	786.97	756.76	707.58	37.6	37.8	37.3	20.93	20.02	18.97
Monroe	527.19	529.94	498.40	34.1	34.3	35.0	15.46	15.45	14.24
New Orleans	834.48	849.47	864.17	38.0	38.7	38.7	21.96	21.95	22.33
Shreveport	654.63	672.47	591.79	34.6	35.3	35.5	18.92	19.05	16.67

AVERAGE HOURS AND EARNINGS FOR PRODUCTION WORKERS IN MANUFACTURING AND SELECTED NONMANUFACTURING INDUSTRIES (Not Seasonally Adjusted)

	Avg. Weekly Earnings (\$)			Avg. Weekly Hours			Avg. Hourly Earnings (\$)		
	JUNE	MAY	JUNE	JUNE	MAY	JUNE	JUNE	MAY	JUNE
	2010	2010	2009	2010	2010	2009	2010	2010	2009
Louisiana									
Mining & Logging	990.61	954.71	911.77	42.1	41.8	38.7	23.53	22.84	23.56
Manufacturing	895.06	918.76	825.77	42.2	42.3	40.9	21.21	21.72	20.19
Durable Goods	864.36	845.83	735.20	42.0	41.0	40.0	20.58	20.63	18.38
Nondurable Goods	933.30	1,006.96	935.34	42.5	43.8	42.0	21.96	22.99	22.27
New Orleans MSA									
Ship and Boat Building	792.36	829.74	749.71	37.2	38.9	39.5	21.30	21.33	18.98

The 97,600 production workers in all manufacturing earned an average of \$895.06 per week in June 2010. Average weekly hours were 42.2, and average hourly earnings were \$21.21.

LOUISIANA UNEMPLOYMENT INSURANCE by CLAIMANT'S PARISH of RESIDENCE

WEEK ENDING - June 12, 2010

RLMA/PARISH	INITIAL CLAIMS	WEEKS CLAIMED	RLMA/PARISH	INITIAL CLAIMS	WEEKS CLAIMED	RLMA/PARISH	INITIAL CLAIMS	WEEKS CLAIMED
RLMA 1	1,181	13,972	RLMA 4	632	6,227	RLMA 7	569	6,352
JEFFERSON	433	5,385	ACADIA	52	456	BIENVILLE	16	164
ORLEANS	451	4,520	EVANGELINE	36	328	BOSSIER	76	810
PLAQUEMINES	8	144	IBERIA	83	780	CADDO	295	3,064
ST. BERNARD	0	19	LAFAYETTE	167	1,922	CLAIBORNE	15	157
ST. CHARLES	53	663	ST. LANDRY	102	1,079	DESOTO	23	276
ST. JAMES	26	496	ST. MARTIN	37	505	LINCOLN	36	617
ST. JOHN	70	911	ST. MARY	75	700	NATCHITOCHEs	37	465
ST. TAMMANY	140	1,834	VERMILION	80	457	RED RIVER	8	88
						SABINE	24	142
						WEBSTER	39	569
RLMA 2	1,047	13,097	RLMA 5	300	3,099	RLMA 8	374	4,324
ASCENSION	118	1,463	ALLEN	23	289	CALDWELL	15	144
E. BATON ROUGE	462	5,738	BEAUREGARD	32	353	EAST CARROLL	19	175
EAST FELICIANA	22	251	CALCASIEU	204	2,160	FRANKLIN	26	270
IBERVILLE	34	511	CAMERON	3	27	JACKSON	14	199
LIVINGSTON	140	1,542	JEFF. DAVIS	38	270	MADISON	10	145
POINTE COUPEE	14	311				MOREHOUSE	52	572
ST. HELENA	10	110	RLMA 6	318	3,255	QUACHITA	158	1,904
TANGIPAHOA	175	2,174	AVOYELLES	32	426	RICHLAND	34	310
WASHINGTON	38	534	CATAHOULA	10	146	TENSAS	7	114
W. BATON ROUGE	29	354	CONCORDIA	14	220	UNION	21	309
WEST FELICIANA	5	109	GRANT	67	228	WEST CARROLL	18	182
			LASALLE	12	99			
RLMA 3	180	1,869	RAPIDES	137	1,412			
ASSUMPTION	33	435	VERNON	32	538			
LAFOURCHE	56	605	WINN	14	186			
TERREBONNE	91	829						

RLMA = REGIONAL LABOR MARKET AREA

THE ABOVE FIGURES INCLUDE REGULAR UNEMPLOYMENT INSURANCE (UI), UNEMPLOYMENT CLAIMS for FEDERAL EMPLOYEES (UCFE), and UNEMPLOYMENT CLAIMS for EX-SERVICE MEMBERS (UCX) DATA ONLY.

Labor Market Questions and Answers!

- **Where can I find Employment and Wage data before 2002?**

Go to the Louisiana Workforce Commission's (LWC's) Web site <http://www.LAWORKS.net> for Employment and Wage data before 2002.

LWC home page – Labor Market Information (top right menu) – LMI Downloads (Forms, Publications, etc.) – Employment and Wages Reports Annual Data – 2008 and 2007 available in excel files, 2006 back to 1988 available in pdf files. Quarterly reports are available from the 1st Quarter 1999 to the 4th Quarter 2009.

- **How can I find additional labor market resources?**

Begin on the LWC home page and select Labor Market Information. Scroll down to the LMI Resource section and select Labor Market Information Resource Links.

Here are a few of the resource links available on this Web page.

U.S. Department of Labor - Bureau of Labor Statistics (BLS) with links to Education Pays!, Business Employment Dynamics, U.S. & States - Labor Force, Employment, and Unemployment Data.

U.S. Department of Labor – Employment & Training (ETA) with links to Career One Stop – Salaries and Benefits, O*Net Resource Center, and National Biotech Work Portal.

U.S. Department of Commerce – U.S. Census Bureau with links to On The Map, Business – Economic Census, Community Economic Development Hot Report, Local Employment Dynamics, North American Industry Classification System (NAICS), and Louisiana Census Data.

U.S. Department of Commerce – Bureau of Economic Analysis (BEA) with a link to the Gross Domestic Product (GDP) by State.

Glossary & Technical Notes

Average Hourly Earnings/Average Weekly Earnings/ Average Weekly Hours (CES/BLS) - average total money earnings, in the survey week (i.e., the week that includes the twelfth of the month), of production workers plus nonsupervisory workers not in production, including overtime, paid vacation and sick leave.

Civilian Labor Force - that portion of the population, age sixteen or older, which is employed or unemployed and actively seeking employment during the reference week of the twelfth of the month.

Employed - the members of the labor force who worked for pay or profit, or had a job from which they were temporarily absent because of illness, vacation, labor dispute, or other reasons not reflecting a shortage of work, or who worked fifteen hours or more as unpaid workers in an enterprise operated by a member of the family.

Unemployed - the members of the labor force who did not work but were seeking work or were awaiting recall from layoffs or the beginning of a new job within thirty days.

Unemployment Rate - the number of unemployed persons expressed as a percentage of the labor force.

Continued Claim - each week claimed subsequent to the filing of the initial claim for a week of unemployment compensation.

Current Employment Statistics (CES) - estimates of nonfarm employment and production workers hours and earnings by industry. They are produced as part of a nationwide program, in cooperation with the Bureau of Labor Statistics (BLS), for the state and each metropolitan statistical area (MSA) from a sample of employing establishments.

Current Population Survey (CPS) - a monthly household survey of the U.S. population conducted for the Bureau of Labor Statistics (BLS) by the Bureau of Census, of 56,000 selected households. Respondents are interviewed to obtain information on the employment status of each household member age 16 and over, during the reference week of the twelfth.

Durable Goods - items with a normal life expectancy of three years or more. Automobiles, furniture, household appliances, and mobile homes are examples.

Initial Claims - a new claim, filed to open a claim for unemployment compensation.

Metropolitan Statistical Area (MSA) - a geographical area comprised of a parish generally containing a central city (or twin cities) of 50,000 inhabitants or more and contiguous parishes that are socially and economically integrated with the central city.

Micropolitan Statistical Area (MC) - a geographical area comprised of a parish containing a central city of at least 10,000 but less than 50,000 inhabitants and contiguous parishes that are socially and economically integrated with the central city.

NAICS (North American Industry Classification System) - an industry classification system that groups establishments into industries based on the activities in which they are primarily engaged.

Nonfarm Employment - employment by place of work that does not include the self employed, unpaid family workers, domestics, or agriculture workers. All estimates of nonfarm employment in this publication are in cooperation with the U.S. Department of Labor Bureau of Labor Statistics and include all full-time and part-time workers who were employed during the pay period including the twelfth of the month.

Nondurable Goods - items that generally last for only a short period of time (less than three years). Food, beverages, apparel, and gasoline are common examples.

Seasonally Adjusted - monthly data that is adjusted to minimize the changes in any time series which result from normal annual occurrences such as Christmas, summer vacations, and weather patterns.

Subsector - refers to the three-digit NAICS code, which will fall under the particular sector. Example: If Manufacturing (31-33) is the industry sector, then Food manufacturing (311), Paper manufacturing (322), Chemical manufacturing (325), Transportation equipment manufacturing (336), are some of the subsectors of manufacturing.

Supersector - refers to these five categories: Total Nonfarm, Total Private, Goods-Producing, Service-Providing, and Private Service-Providing.

Summary Industry Sector - a combination of industry sectors. A summary sector may or may not be published. The summary industry sectors are Mining & Logging; Construction; Manufacturing; Trade, Transportation, & Utilities; Information; Financial Activities; Professional & Business Services; Education & Health Services; Leisure & Hospitality; Other Services; and Government.

Industry Sector - 20 industry sectors based on two-digit NAICS code. They are Agriculture, Forestry, Fishing and Hunting (11), Mining (21), Utilities (22), Construction (23), Manufacturing (31-33), Wholesale Trade (42), Retail Trade (44-45), Transportation and Warehousing (48-49), Information (51), Finance and Insurance (52), Real Estate and Rental and Leasing (53), Professional and Technical Services (54), Management of Companies and Enterprises (55), Administrative and Waste Services (56), Educational Services (61), Health Care and Social Assistance (62), Arts, Entertainment, and Recreation (71), Accommodation and Food Services (72), Other Services (81), and Public Administration (92).

Constraints of the monthly civilian labor force and nonfarm employment estimates:

The civilian labor force estimates are derived by a monthly survey of approximately 750 households throughout Louisiana following the Bureau of Labor Statistics (BLS) methodology. The US Census Bureau conducts the survey by calling randomly selected households and providing BLS with survey results. Households are asked for the number of residents who are sixteen and over and whether they were working or actively looking for work during the week of the twelfth of the month. Responses to these questions become part of the formula to determine the number of people employed and the number of individuals unemployed for the state, MSAs, and each parish every month.

The nonfarm employment estimates are derived from responses received from the monthly BLS survey of 2,757 businesses across the state surveyed directly by this agency, and an additional 2,500 businesses that respond directly to BLS with their employment data. Responses capture employment activity during the twelfth of each month. This survey relies on responses from these businesses to produce industry employment levels for the state and all metropolitan statistical areas.

Both data sets are comparable with estimates for the U.S., all 50 states, and 270 metropolitan areas across the U.S.

LABOR MARKET INFORMATION WEB LINKS

Civilian Labor Force - LAUS (Local Area Unemployment Statistics) –

Employment, Unemployment and Unemployment Insurance Rate

LA <http://www.voshost.com/altentry.asp?action=lmiguest>

Left menu: Historical Data Analysis – Employment and Wage Data – Labor Force Data – Labor Force Employment and Unemployment (LAUS)

States <http://data.bls.gov/cgi-bin/dsrv?la>

US <http://data.bls.gov:8080/PDQ/outside.jsp?survey=ln>

Consumer Price Index (US) <http://data.bls.gov/cgi-bin/surveymost?cu>

Download Louisiana Workforce Commission’s Labor Market Information Products

LA http://www.laworks.net/Downloads/Downloads_LMI.asp

Employment and Wage Data – Quarterly Census of Employment and Wages (QCEW)

LA <http://www.voshost.com/altentry.asp?action=lmiguest>

Left menu: Historical Data Analysis – Employment and Wage Data – Industry Data – Quarterly Census of Employment and Wages (QCEW)

States & US <http://data.bls.gov/cgi-bin/dsrv?en>

NAICS (North American Industry Classification System) Codes Look-Up Table

<http://www.census.gov/eos/www/naics>

Nonfarm Employment, Hours and Earnings - CES (Current Employment Statistics)

LA <http://www.voshost.com/altentry.asp?action=lmiguest>

Left menu: Historical Data Analysis – Employment and Wage Data – Industry Data – Current Employment Statistics (CES) – select Show Earnings Data under table

States <http://data.bls.gov/cgi-bin/dsrv?sm>

US <http://data.bls.gov/cgi-bin/dsrv?ce>

Unemployment Insurance Claimants Data (by Occupation) - Unemployment Insurance (UI)

LA <http://www.voshost.com/altentry.asp?action=lmiguest>

Left menu: Historical Data Analysis – Employment and Wage Data – Labor Force Data – Unemployment Insurance Claimants

Unemployment Insurance Claims Data (by Region, Parish, Industry) - UI

LA http://www.laworks.net/LaborMarketInfo/LMI_UIClaimsReportMenu.asp

States & US <http://ows.doleta.gov/unemploy/claims.asp>

Unemployment Rates for all States - LAUS

States <http://www.bls.gov/web/laumstrk.htm>



Office of Occupational Information Services
Research & Statistics Division
Post Office Box 94094
Baton Rouge, LA 70804-9094

Data for: 6/2010



Workforce At A Glance is published monthly by the Louisiana Workforce Commission (LWC). The material in this publication is not copyrighted and may be reproduced; however, the LWC would appreciate credit for the material used and a copy of the reprint.

LMI Staff:

Patty Granier, Manager
Ramona Robichaux, Supervisor
Richard Pierce, Layout and Design
Benjamin Caldwell, Karen Clark, Jonathan Helis,
Tequila Perkins and Ronald Smith

Contributors:

Florence Gibson-Williams, Eula Sanders,
Natalie Foster-Lawrence, Mark Jones, Helen Hillard,
Tara Robinson, William F. Johnson, and Karen Clark

Contact Us:

Phone (225) 342-3141; Fax (225) 219-7759
Toll Free (888) 302-7662;
Email OOIS@ldol.state.la.us

Bobby Jindal, Governor
State of Louisiana

Curt Eysink, Executive Director
Louisiana Workforce Commission

Raj Jindal,
Information Technology Director

Michael "Dino" DeMarte,
Research and Statistics Director

Visit our Web site:
www.laworks.net